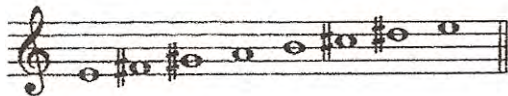


Finger Lakes Community College

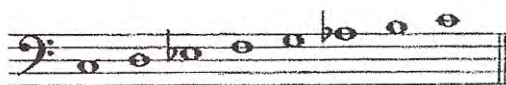
SAMPLE THEORY PLACEMENT EXAM

1. What scale is noted in this example?



- a. E major
- b. E natural minor
- c. E harmonic minor
- d. E melodic minor
- e. none of the above

2. What scale is notated in this example?



- a. C Major
- b. C natural minor
- c. C harmonic minor
- d. C melodic minor
- e. none of the above

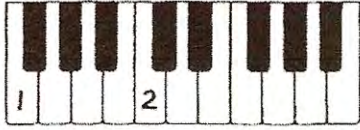
3. The relative minor of G major is:

- a. D minor
- b. G minor
- c. B minor
- d. E minor
- e. none of the above

4. The relative Major of G minor is:

- a. E-flat Major
- b. B-flat Major
- c. B Major
- d. A major
- e. none of the above

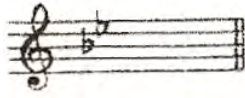
Questions 5 – 7 refer to the example below:



5. Name the key that is labeled "1".
  - a. A
  - b. B
  - c. C
  - d. D
  - e. F
  
6. Name the key that is labeled "2".
  - a. C
  - b. D
  - c. E
  - d. F
  - e. G
  
7. What is the interval between "1" & "2"?
  - a. minor sixth
  - b. diminished fifth
  - c. perfect fourth
  - d. perfect fifth
  - e. none of the above
  
8. The 3<sup>rd</sup> note of the D Major scale is:
  - a. F#
  - b. F
  - c. G#
  - d. A
  - e. none of the above
  
9. The 6<sup>th</sup> note of the D melodic minor scale is:
  - a. B<sup>b</sup>
  - b. B
  - c. A
  - d. C#
  - e. none of the above

10. What Major key is represented by this key signature?

- a. E<sup>b</sup> Major
- b. A<sup>b</sup> Major
- c. B<sup>b</sup> Major
- d. F major
- e. none of the above



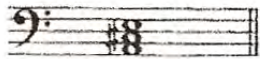
11. What minor key is represented by this key signature?

- a. F# minor
- b. B minor
- c. C# minor
- d. F minor
- e. none of the above



12. What is the quality of this triad?

- a. Major
- b. Minor
- c. Augmented
- d. Diminished
- e. none of the above



13. What is the quality of this triad?

- a. Major
- b. Minor
- c. Augmented
- d. Diminished
- e. none of the above



14. What note is the 3<sup>rd</sup> of an A major triad?

- a. C
- b. C#
- c. C<sup>b</sup>
- d. C double sharp
- e. none of the above

15. What note is the 5<sup>th</sup> of a G minor triad?

- a. D
- b. D<sup>b</sup>
- c. B
- d. B<sup>b</sup>
- e. none of the above

16. What interval is notated in the example?

- a. Major 3<sup>rd</sup>
- b. minor 6<sup>th</sup>
- c. Major 6<sup>th</sup>
- d. perfect 5<sup>th</sup>
- e. none of the above



17. What note value completes this measure?



- a. eighth note
- b. dotted eighth note
- c. quarter note
- d. dotted quarter note
- e. none of the above

18. Select the time signature for this example



- a. 2/2
- b. 4/4
- c. 6/8
- d. 3/16
- e. none of the above

ANSWERS to the **Sample** Theory Placement Exam

1. a
2. c
3. d
4. b
5. e
6. a
7. d
8. a
9. b
10. c
11. b
12. a
13. d
14. b
15. a
16. e
17. d
18. c